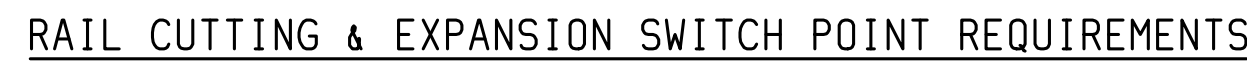




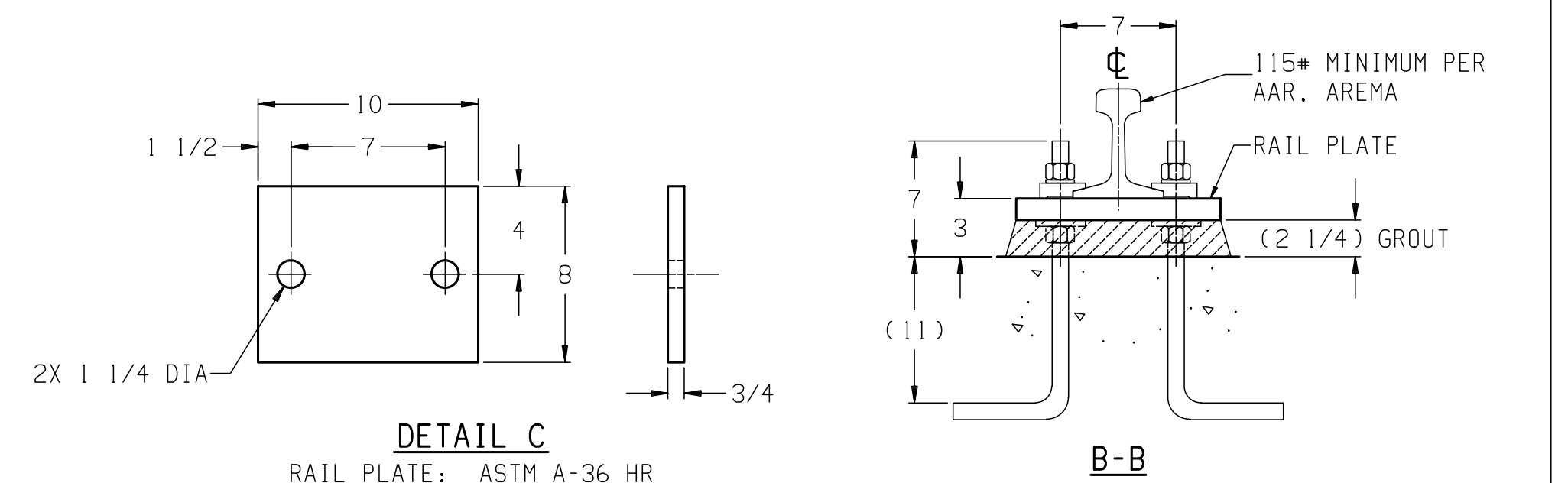
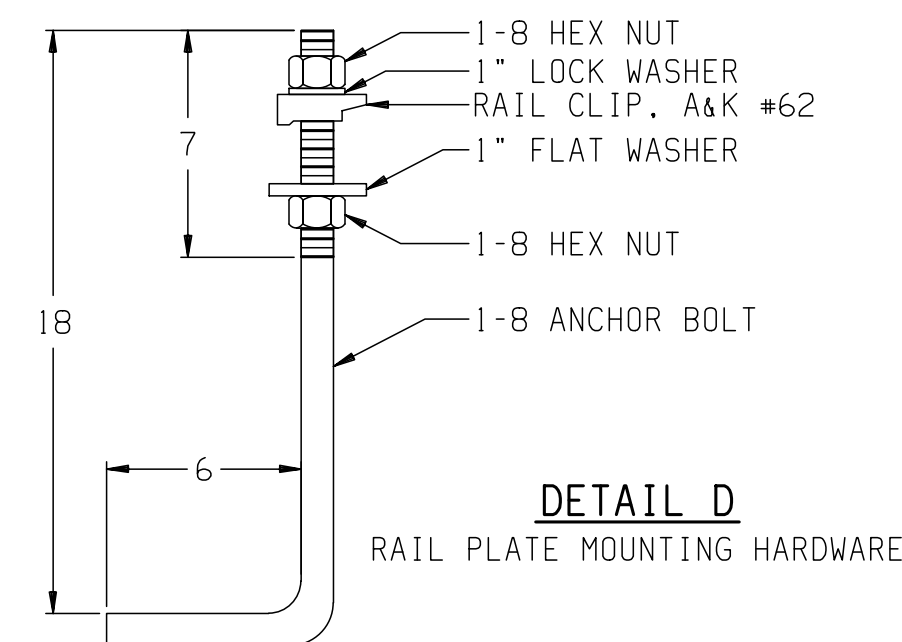
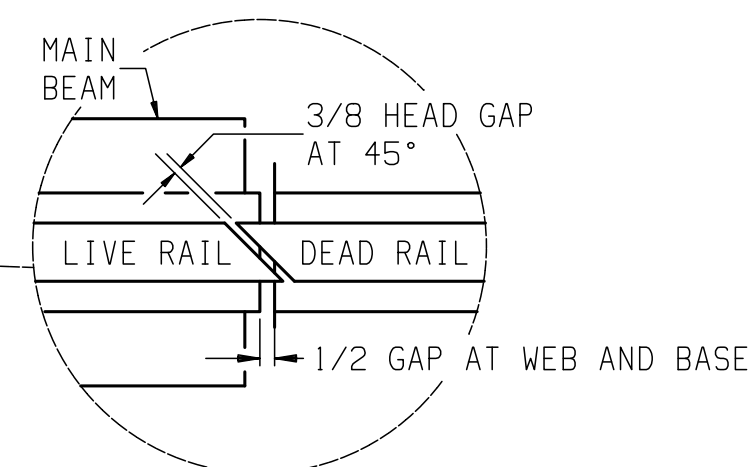
TOTAL: 8499

NOTES

1. TRACK MUST BE STRAIGHT FOR 500 FT. BEFORE AND AFTER SCALE.
2. ALL CONCRETE AND REINFORCING STEEL TO BE PLACED ACCORDING TO THE BEST PRACTICE AS PRESCRIBED BY THE LATEST AREMA MANUAL FOR RAILWAY ENGINEERING, CHAPTER 8.
3. MINIMUM GROUT REQUIREMENT FOR RAIL PLATES IS A NON-SHRINK, METALLIC GROUT WHICH DEVELOPS A MINIMUM COMPRESSIVE STRENGTH OF 8,500 PSI IN 28 DAYS (EXAMPLE: 5-STAR METALLIC GROUT OR EMBECO 636PLUS). IN HIGH TRAFFIC AND/OR CORROSIVE ENVIRONMENT APPLICATIONS, A NON-SHRINK EPOXY GROUT IS RECOMMENDED (EXAMPLE: 5-STAR HP EPOXY GROUT). BE SURE TO FOLLOW GROUT MANUFACTURER'S INSTRUCTIONS FOR APPLICATION.
4. RAIL SHOULD BE WELDED WITHOUT SPLICE JOINTS ON APPROACHES.
5. ALL PARTS ASSOCIATED WITH THE APPROACH SLABS AND THEIR INSTALLATION ARE TO BE PROVIDED BY OTHERS.



NOTE: CUSTOMER TO PROVIDE SWITCH POINTS OR EXPANSION JOINTS (FOR EXPANSION PURPOSES) IN APPROACH RAILS ON BOTH SIDES OF THE SCALE SYSTEM.
NOTE: THE SWITCHPOINTS / EXPANSION JOINTS MUST PRECEDE THE APPROACH SLABS.



REV	CHANGE		BY	DATE	SCALE NTS		<div>METTLER TOLEDO</div>			
A	REBAR TOTAL WAS 4899		JLB	10/03/07	DATE	09/16/02				
B	ADDED VRS241, UPDATED NOTE AND				DRN	ELB APPD JLB				
	N109 (WAS TC205306)		KRS	06/26/15	TITLE					
					VRS241/7260B LAYOUT APPROACH SLAB CIM 115* RAIL					
					UNLESS OTHERWISE SPECIFIED, ALL DIMENSIONS ARE IN INCHES, AND DIMENSIONAL TOLERANCES ARE:		THIS PRINT IS FURNISHED WITH THE UNDERSTANDING THAT THE ESSENCE THEREOF WILL NOT BE REPRODUCED IN WHOLE OR IN PART WITHOUT WRITTEN AUTHORIZATION OF METTLER-TOLEDO, LLC. ALL DESIGNS ARE THE PROPERTY OF METTLER-TOLEDO, LLC, AND WILL BE PROTECTED BY PATENTS.			
					FRACTIONAL #1/32	DECIMAL .XX ±.02 .XXX ±.005	ANGULAR ±.5°	61808194	REV	B